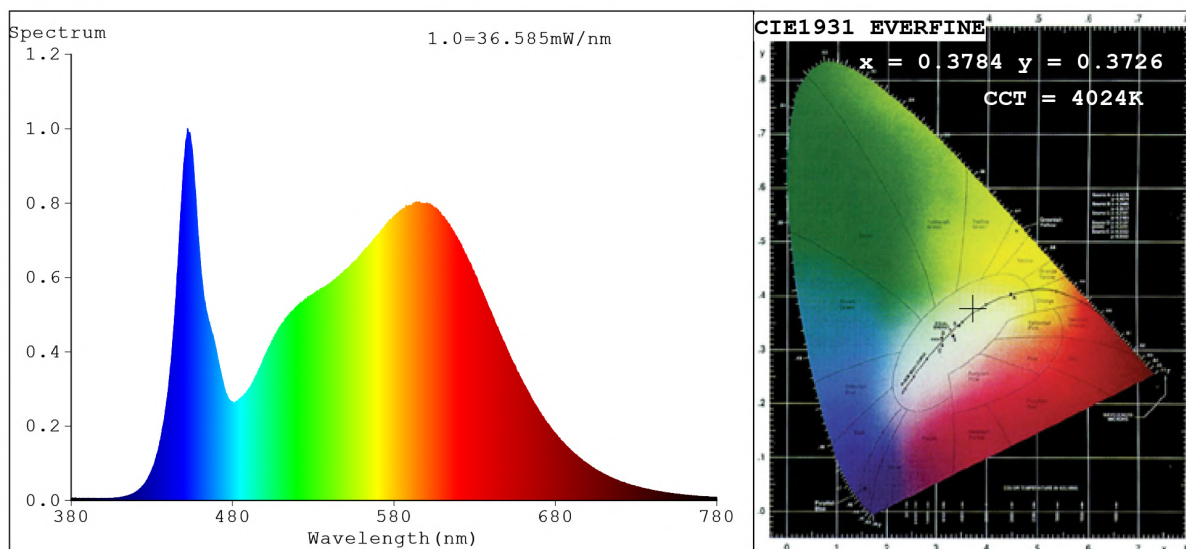


Spectrum Test Report



Color Parameters:

Chromaticity Coordinate: $x=0.3784$ $y=0.3726$ / $u'=0.2254$ $v'=0.4995$
 CCT=4024K (Duv=-0.0014) Dominant WL: $\lambda_d = 579.8\text{nm}$ Purity=25.4%
 Ratio: R=18.6% G=77.4% B=4.0%; Peak WL: $\lambda_p = 452.2\text{nm}$ FWHM=20.4nm
 Render Index: Ra=84.7 CRI=78.8 TM30: Rf=83 Rg=95
 R1 =84 R2 =92 R3 =96 R4 =83 R5 =84 R6 =88 R7 =85
 R8 =66 R9 =14 R10=81 R11=82 R12=64 R13=86 R14=98 R15=78

Photo Parameters:

Flux = 1670 lm Eff. : 158.15 lm/W Fe = 5.118 W Scotopic: 2902 S/P: 1.7378

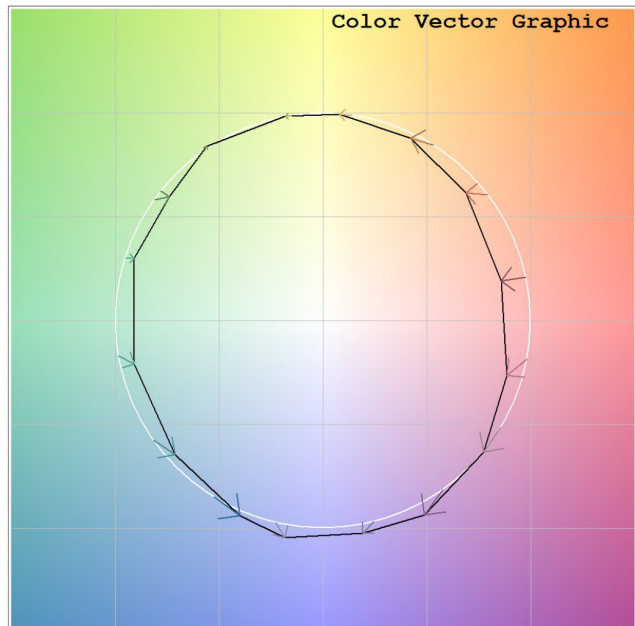
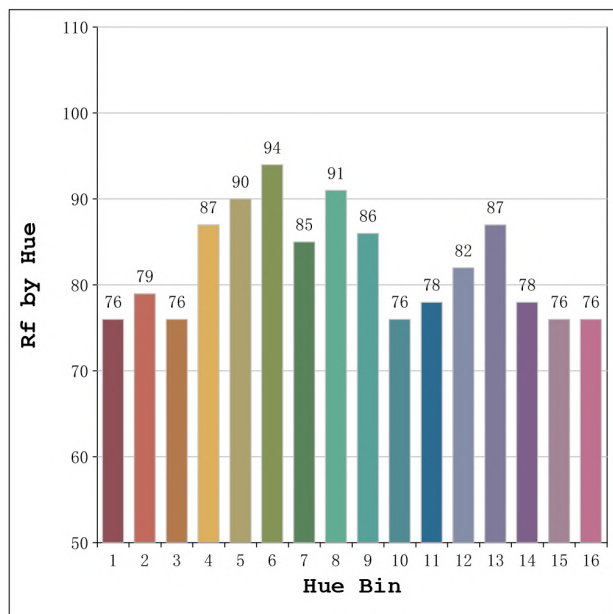
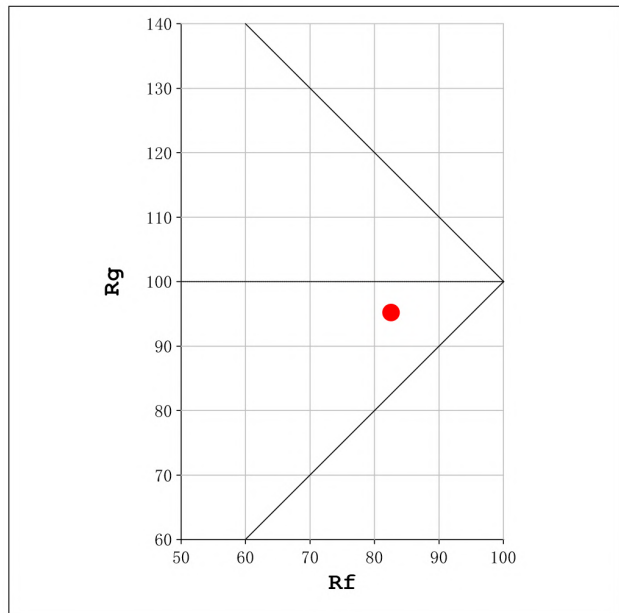
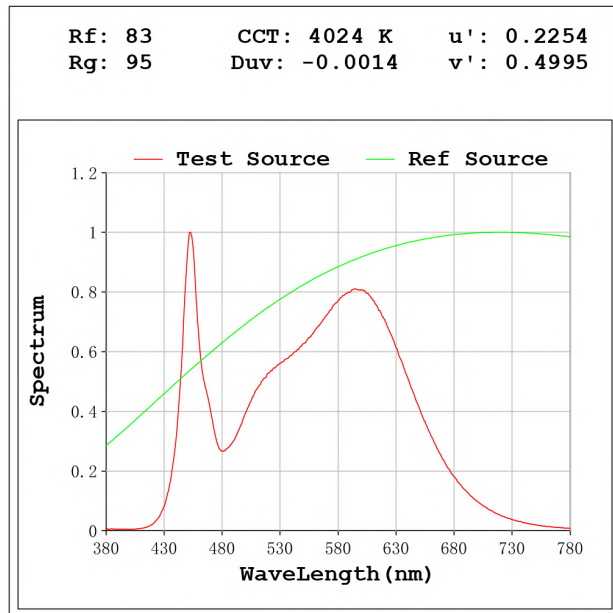
Electrical parameters:

V = 23.998 V I = 0.4400 A P = 10.56 W PF = 1.000

Status: Integral T = 624 ms Ip = 37936 (58%)

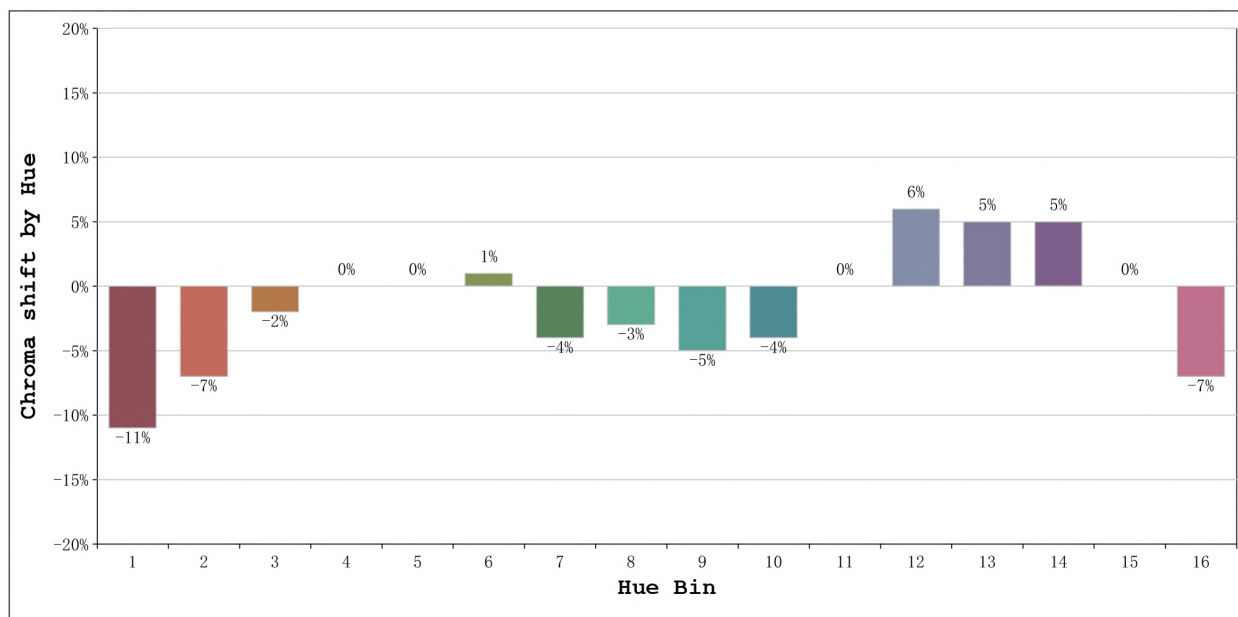
Model: Ecoled Élite 10 4000K
 Tester: Sergio Carneros
 Temperature: 25Deg
 Manufacturer: Luz Negra S.L.

Number: 31.009
 Date: 2023-09-13 16:24:16
 Humidity: 57%
 Remarks: 100cm de tira flexible



Model:Ecoled Élite 10 4000K
 Tester:Sergio Carneros
 Temperature:25Deg
 Manufacturer:Luz Negra S.L.

Number: 31.009
 Date:2023-09-13 16:24:16
 Humidity:57%
 Remarks:100cm de tira flexible



			Graphic shift(%)	
Hue Bin	Hue Angle	Rf	Chroma	Hue
1	0.0° - 22.5°	76	-11	0
2	22.5° - 45.0°	79	-7	7
3	45.0° - 67.5°	76	-2	11
4	67.5° - 90.0°	87	0	6
5	90.0° - 112.5°	90	0	3
6	112.5° - 135.0°	94	1	-1
7	135.0° - 157.5°	85	-4	-4
8	157.5° - 180.0°	91	-3	0
9	180.0° - 202.5°	86	-5	5
10	202.5° - 225.0°	76	-4	12
11	225.0° - 247.5°	78	0	15
12	247.5° - 270.0°	82	6	6
13	270.0° - 292.5°	87	5	-6
14	292.5° - 315.0°	78	5	-13
15	315.0° - 337.5°	76	0	-14
16	337.5° - 360.0°	76	-7	-8

Model:Ecoled Élite 10 4000K
Tester:Sergio Carneros
Temperature:25Deg
Manufacturer:Luz Negra S.L.

Number: 31.009
Date:2023-09-13 16:24:16
Humidity:57%
Remarks:100cm de tira flexible